



Riverway, Palmers Green, London, N13
Offers In Excess Of £625,000 Freehold

Anthony Webb
ESTATE AGENTS

Riverway, Palmers Green, London, N13

A CHAIN FREE well presented three bedroom family home located in the heart of Palmers Green offering over 1000sq ft of bright and airy living accommodation.

Riverway is a popular residential turning located between Hazelwood Lane and Oakthorpe Road. The property is a short walk to Green Lanes shops, restaurants and Palmers Green mainline station into Moorgate. Green spaces are well catered for with Broomfield Park, Hazelwood Recreation Ground and the New River within a few minutes walk. The property falls within the Hazelwood Primary School catchment area.

Block paved drive to front for two cars • Hallway with laminate floor • Front reception with bay window and feature fireplace • Spacious open plan family kitchen/diner with doors to garden • Fitted kitchen units • First floor landing with access to loft with potential to convert • Two double bedrooms • Single bedroom • Gas central heating • Double glazing • West facing rear garden.

Enfield Council Tax Band E

- Three bedrooms
- Terrace house
- Living room
- Open plan kitchen/diner
- Modern bathroom
- Double glazing/gas central heating
- Off street parking
- Rear garden





Riverway Palmers Green London N13 5JU

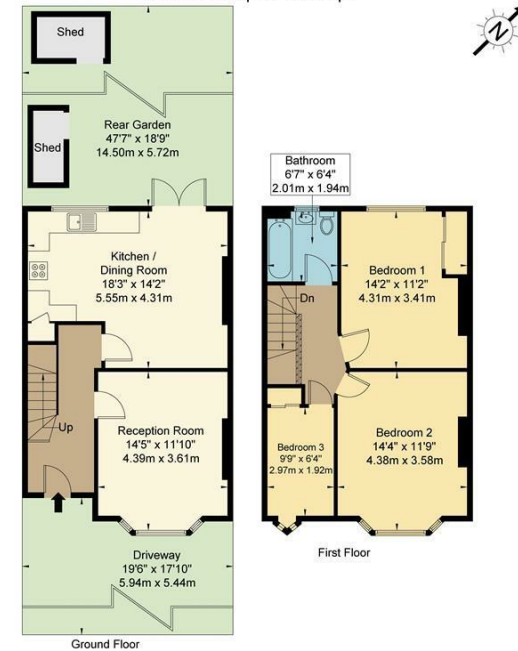
Tenure: Freehold
Gross Internal Area: 1014.00 sq ft



Energy Efficiency Rating		Current	Potential
Very energy efficient - lower running costs			
(92 plus) A			82
(81-91) B			
(69-80) C		65	
(55-68) D			
(39-54) E			
(21-38) F			
(1-20) G			
Not energy efficient - higher running costs			
England & Wales		EU Directive 2002/91/EC	
Environmental Impact (CO ₂) Rating		Current	Potential
Very environmentally friendly - lower CO ₂ emissions			
(92 plus) A			
(81-91) B			
(69-80) C			
(55-68) D			
(39-54) E			
(21-38) F			
(1-20) G			
Not environmentally friendly - higher CO ₂ emissions			
England & Wales		EU Directive 2002/91/EC	

Riverway, N13 5JU

Approx. Gross Internal Area = 94.2 sq m / 1014 sq ft
Shed = 3.9 sq m / 42 sq ft
Total = 98.1 sq m / 1056 sq ft



Ground Floor

First Floor

Copyright BLEU PLAN

The Floor plan is not to scale and measurements and areas shown are approximate and therefore should be used for illustrative purposes only. The plan has been prepared in accordance with the RICS code of Measuring Practice and whilst we have confidence in the information produced it must not be relied on. If there is any aspect of particular importance, you should carry out or commission your own inspection of the property.
Copyright @ BLEUPLAN

Property particulars as supplied by Anthony Webb Estate Agents are set out as a general outline in accordance with the Property Misdescriptions Act (1991) only for the guidance of intending purchasers of lessees, and do not constitute any part of an offer or contract. Details are given without any responsibility, and any intending purchasers, lessees or third parties should not rely on them as inspection or otherwise as to the correctness of each of them. We have not carried out a structural survey and the services, appliances and specific fittings have not been tested. All photographs, measurements, floor plans and distances referred to are given as a guide only and should not be relied upon for the purchase of carpets or any other fixtures statements or representations of fact, but must satisfy themselves by or of fittings, gardens, roof terraces, balconies and communal gardens as well as tenure and lease details cannot have their accuracy guaranteed for intending purchasers. Lease details, service ground rent (where applicable) are given as a guide only and should be checked and confirmed by your solicitor prior to exchange of contracts. no person in the employment of Anthony Webb has any authority to make any representation or warranty whatever in relation to this property.

348 Green Lanes, Palmers Green, London N13 5TJ
020 8882 7888
palmersgreen@anthonywebb.co.uk
anthonywebb.co.uk

Anthony Webb
ESTATE AGENTS